

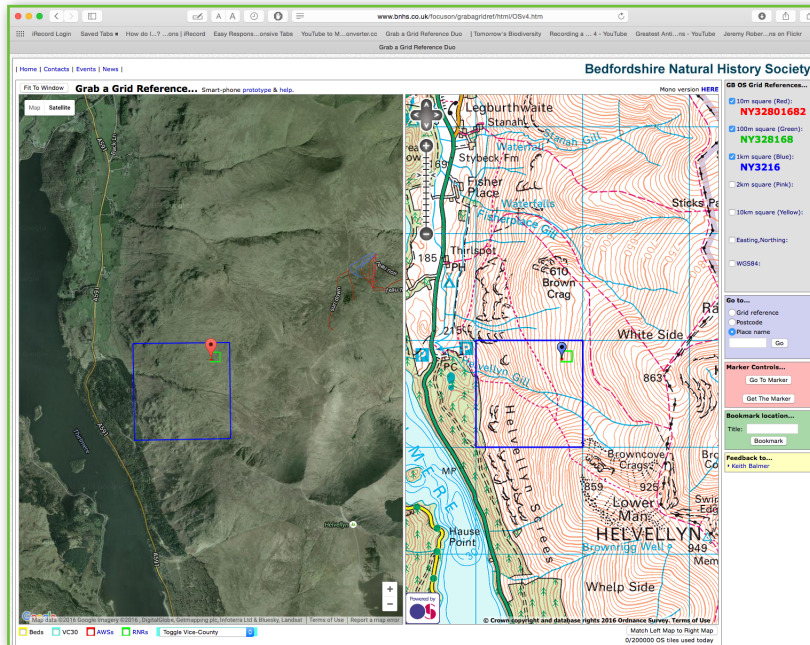
## Grab a Grid Reference Duo

There are a number of wonderful on-line facilities to help with your recording of localities by OS grid-references.

One of the most 'feature-rich' of these is 'Grab a Grid Reference Duo', at this URL:

<http://www.bnhs.co.uk/focuson/grabagridref/html/OSv4.htm>

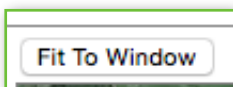
... which opens this page:



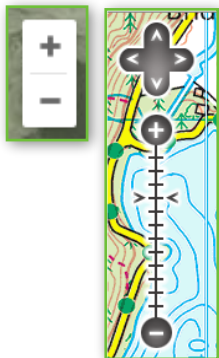
(It is hosted, and developed, by Bedfordshire Natural History Society - which is why the window opens with part of Bedfordshire!) It is "Duo" because it displays both a map segment (courtesy of Ordnance Survey, 1:50 000 scale) and an aerial view (courtesy of Google). There is also a 'mono' version linked from the page.]

Note that there are instructions provided on that page if you scroll down below the maps. The following may however make the learning curve easier.

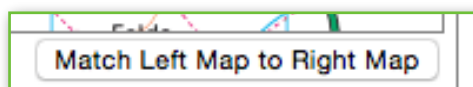
### First steps ~ note the following controls



← **A:** (top-left corner of window) Fills your window with the two maps.



← **B:** Zoom controls (bottom-right of left pane, and top-left of right pane) You can alter the scales of the maps independently of each other.

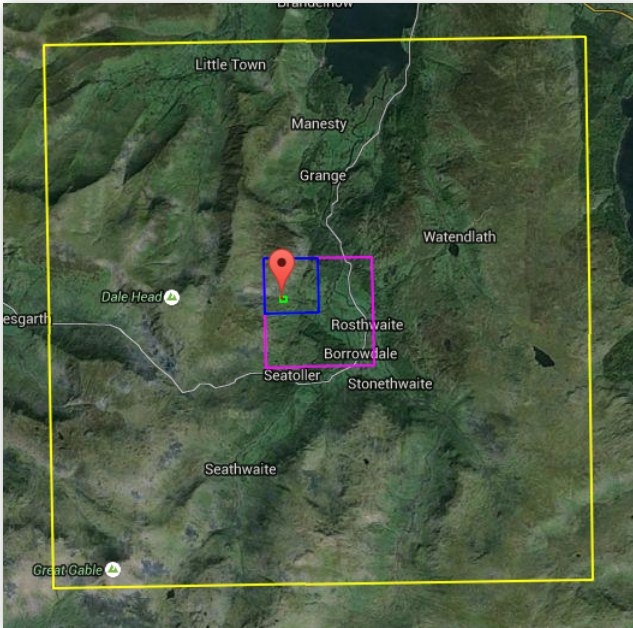


↑ **C:** (bottom-right of window) Click this to make the OS map and the aerial panes cover the same geographical area.

## Grab a Grid Reference Duo

**D:** (middle-right of window) To move to the area desired, select one of the three buttons, grid-reference, postcode, or place name, add the relevant information, and click **Go**.

(Note that pressing Enter/Return does not initiate a result - you have to click **Go!**)



You will see the position, indicated by flag-markers on the panes (red on the aerial pane and blue on the OS map pane), and within squares of different sizes.

Depending which of the five available buttons you have ticked (as right), the squares appearing are

- ~ yellow for the *hectad*,
- ~ pink for the *tetrad*,
- ~ blue for the *monad*,
- ~ green for the *100-metre-square*, and
- ~ red for the *10-metre-square*,

... with the grid-references listed, as on the right:

Note that the tetrad designation is in DINTY format: very useful!

To move around the area, the red marker on the **left** pane can be **dragged**, when the squares and the listed grid-references refresh accordingly. When the red marker reaches the edge of the pane, the display scrolls below it. (Note the blue marker cannot be dragged.)

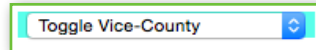
← **E:** 'Go To Marker' centres the markers in the panes.

If the marker disappears off screen, 'Get The Marker' brings it back!

## Grab a Grid Reference Duo

### Vice-county boundaries

Below the left (aerial) pane, you will see the field:



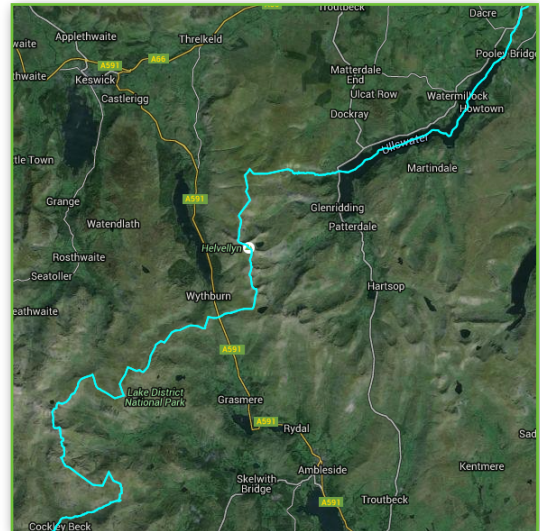
Click the ⇅ arrows on its right to get the drop-down list of vice-county names.

Select the VC you want, and (after a few seconds) the boundary appears in blue (obviously, only if your aerial view covers (some of) that VC boundary! - zoom out, if not).

(Note that the boundary appears only on the left pane, and not the right pane).

You can click more names on the list to add more VC boundaries.

To conceal the boundary(ies) again, click on the **second** item in the drop-down list: 'Clear Vice-counties'.



Verdict: fantastically useful for pin-pointing locations, checking grid-references are correct, even improving the resolution of your GRs, e.g. when your GPS meter/tablet/phone suggests a grid-reference on the wrong side of a lane or stream, you can record the 'correct' GR.

### Mobile use

The site works well in any browser on a tablet, and indeed, if one had a cellular/data connection, you could use it 'out in the field'.

An app. for smart-phones is in preparation, I gather (*above left pane*):

Smart-phone [prototype & help.](#)

**Let me know the ways you have found to use the site, and I'll update this guide.**

Jeremy R. 17 April 16