

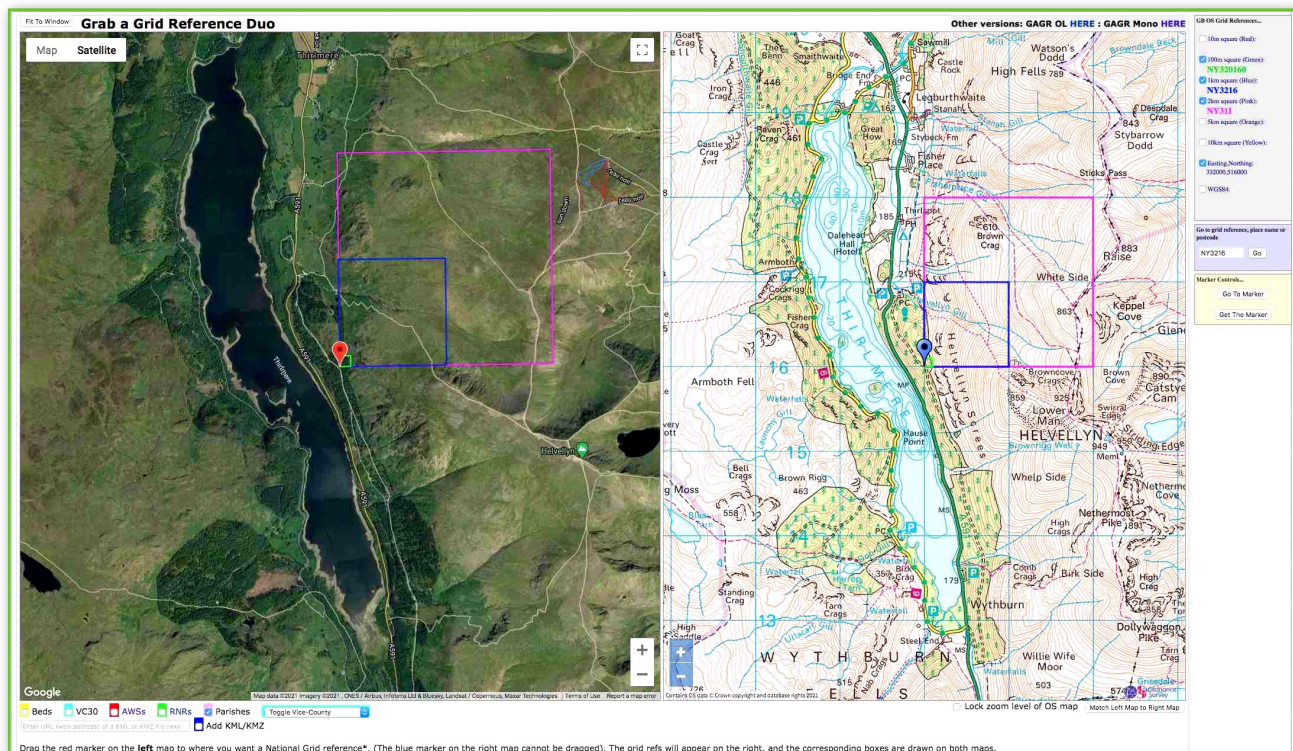
Grab a Grid Reference Duo

There are a number of wonderful on-line facilities to help with your recording of localities by O.S. grid-references.

One of the most 'feature-rich' of these is 'Grab a Grid Reference Duo', at this URL:

<http://www.bnhs.co.uk/2019/technology/grabagridref/gagr.php#map>

It is developed, and hosted, by Bedfordshire Natural History Society — which is why the panes open in Bedfordshire! It is "Duo" because it displays both a map segment (courtesy of Ordnance Survey) and an aerial view (courtesy of Google). There are other versions, from that screen.



Note that there is a set instructions provided on that screen if you scroll down below the maps (you can see just the first line showing in my screen-grab above).

The following may however make the learning curve easier.

Click the link at the top to open the application. Shift the view to the bit you want to focus on by putting something suitably *local* into the location field on the right of the screen (as below), such as a grid-ref, 'NY3216', place-name, or postcode.

Go to grid reference, place name or postcode

NY3216 Go

Put ticks in any of the boxes in the panel (as right), for any of the 'squares' you want to display, and select 'Go' or <Enter>.

GB OS Grid References...

☐ 10m square (Red):

☒ 100m square (Green):
NY320160

☒ 1km square (Blue):
NY3216

☒ 2km square (Pink):
NY311

☐ 5km square (Orange):

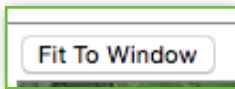
☐ 10km square (Yellow):

☒ Easting, Northing:
332000, 516000

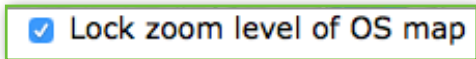
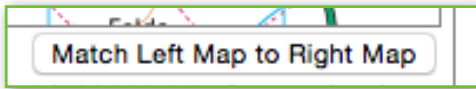
☐ WGS84:

Those squares then appear on both aerial and map panes.

Note the following controls



(top-left corner of window): this fills your window with the two panes.



(bottom-right below map) these two allow you either to match the scales of the two panes as you alter the +/- zoom buttons, or keep the O.S. map scale constant.



You will see the position, indicated by flag-markers on the panes (red on aerial and blue on OS), at the south-east corners of the squares you've asked for.

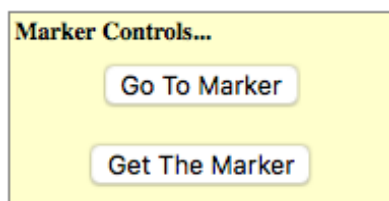
Depending which of the five available buttons you ticked, the squares appearing are

- ~ red for the *10-metre-square*,
- ~ green for the *100-metre-square*, and
- ~ blue for the **monad**,
- ~ pink for the **tetrad**,
- ~ yellow for the **hectad**,

... with their grid-references listed.

Note that the tetrad designation is in the '**DINTY**' format: very useful!

To move around the area, you drag the left, **red**, marker, and the squares and the listed grid-references refresh accordingly. When the red marker reaches the edge of the pane, the display scrolls below it. Dragging the right, **blue**, marker moves the O.S. map itself.

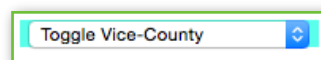


'Go To Marker' centres the markers in the panes.

If the marker has moved off one or both panes, 'Get The Marker' brings it back to the centre.

Vice-county boundaries

Below the left (aerial) pane, you will see the field:



Click the ⇅ arrows on its right to get the drop-down list of vice-county names.

Select the VC you want, and (after a few seconds delay) the boundary appears in blue (obviously, only if your aerial view covers (some of) that VC boundary! If you can't see it, zoom out!).

(Note that the boundary appears only on the **left** pane, and not the right pane).

You can click more names on the list to add more VC boundaries.

To conceal the boundary(ies) again, click on the **second** item in the drop-down list: 'Clear Vice-Counties'.

